



PRIMARY INDUSTRIES



JATROPHA



Thermal Slip-On® End to End Tags

Low Density Polyethylene (TX) 10 mil
(Vertical Feed)

Features:

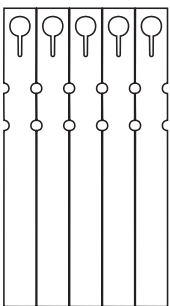
These specialised tags can be pre-printed flexographically during the manufacturing process or with the thermal transfer printing method.

Thermal Slip-On® Tags

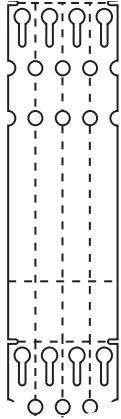
Low Density Polyethylene (TX) 10 mil
(Horizontal Feed)

These tags can also be pre-printed with the hot stamp or thermal transfer printing method. Both processes are dry printing methods and will last in the sun for several years.

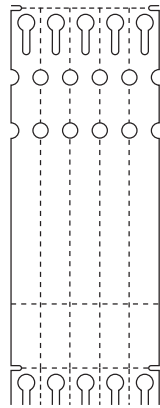
TX10775
(Vertical Feed)



TT10014
(Vertical Feed)



TT10015
(Vertical Feed)



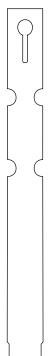
End-to-End Slip-On® Tags



	TX10775	TT10014	TT10015
Size	3/4 x 7	1 x 10	1 x 10
Description	5 across	4 across with 2" tear-off	5 across with 2" tear-off
QTY Roll/Case	2M / 24M	1M / 12M	2M / 8M
Weight/Case	43 lb.	43 lb.	21 lb.



TX1055T • TX1075T
(Horizontal Feed)



TX1077T
TX1076T • TX1071T
TX1097T • TX1091T
(Horizontal Feed)



TT1097T • TT1091T
(Horizontal Feed)



Thermal Slip-On® Tags



	TX1055T	TX1075T	TX1076T	TX1077T
Size	1/2 x 5	1/2 x 7	5/8 x 7	3/4 x 7
QTY Roll/Case	4M / 32M	3M / 15M	3M / 15M	2M / 10M
Weight/Case	29 lb.	20 lb.	23 lb.	20 lb.

	TX1097T	TX1071T	TX1091T	TT1091T 1-7/8" Tear-off	TT1097T 1-7/8" Tear-off
Size	3/4 x 9	1 x 7	1 x 9	1 x 9	3/4 x 9
QTY Roll/Case	2M / 10M	2M / 10M	1M / 8M	1M / 8M	2M / 10M
Weight/Case	26 lb.	24 lb.	27 lb.	27 lb.	26 lb.

Please note: All measurements for products are in inches